

高清网络摄像机

HD IP Camera

KEDACOM

快速安装指南

Quick Start Guide

一 前言

感谢您购买我司产品，如对本公司产品有疑问或需要，请随时和我们联系。

我们尽最大努力来保证本手册信息的正确性，如因升级等原因发生信息修改，恕不另行通知。获取最新文档请联系产品供应商。

二 安全说明

此内容（手册）的目的是确保用户正确使用本产品，以避免危险或财产损失。在使用产品之前，请认真阅读此手册并妥善保存以备日后参考。如果用户因没有按照以下安全说明，致使设备不能正常使用或损坏等情况，责任由用户承担。

1. 请使用满足安全电压要求的电源。
2. 如果设备工作不正常，请联系购买设备的商店（厂家）或最近的服务中心。不要以任何方式随意拆卸或修改设备。
3. 请防止此产品从高处摔落或受强烈敲击。
4. 清洁镜头时，请使用吹气球或专业镜头布除去镜头上的污垢。清洁透明护罩时，须使用足够柔软、干燥的布清洁擦拭，切勿使用含有酒精、苯等的清洁剂进行洗涤。
5. 避免将摄像机对准强光（如灯光照明、太阳光等处）聚焦，否则容易引起过亮或漏光现象（这并非摄像机故障），将影响摄像机寿命。
6. 避免将产品暴露在非用户手册所示的工作环境下使用。

工作环境			
工作电源	红外机型	AC24V, 0.5A	DC12V, 0.8A
	非红外机型	AC24V, 0.3A	DC12V, 0.5A
温度	-40°C ~60°C		
湿度	10%~95%（无凝结）		
海拔高度	-60m~3000m		
大气压	86kPa~106kPa		

7. 使用时不可让水或任何液体流入摄像机。
8. 当运送摄像机时，请重新以出厂时的包装进行包装，或用同等品质的材料包装。
9. 需要替换部件时，请事先与经销商联系，更换指定型号的部件，或与原部件具有相同特性的部件。擅自使用其它部件进行替换，后果自负。
10. 本产品达到 IP67 防护等级，工作于室外露天环境时，请注意设备尾线的防水处理。

【说明】 更多信息见附带光盘中的《高清网络摄像机用户手册》。

三 设备安装

摄像机支持吊装、壁装、吸顶安装、嵌入式安装、墙面安装，安装前请预先准备安装配件。

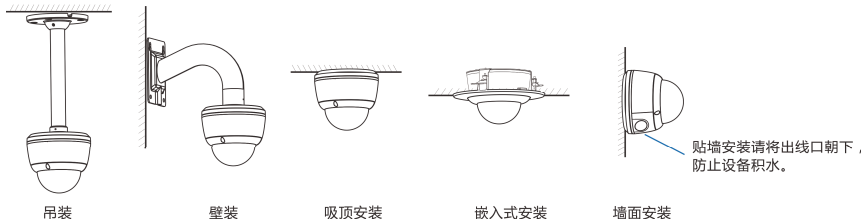


图 1

1. 使用定位模板在安装面上打孔，将设备固定在支架或安装面上。

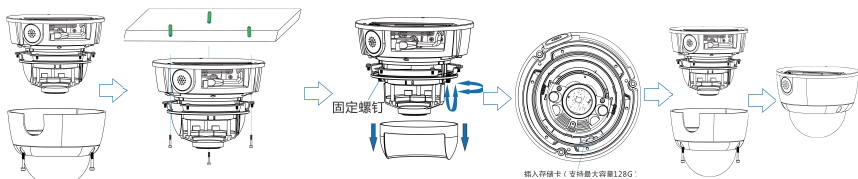


图 2

2. 线缆可从设备顶部或侧面穿出，请根据需要选择。侧面出线方法如下图：

③ 防暴半球采用侧面出线方式时，
应使用G3/4-14螺纹金属管走线

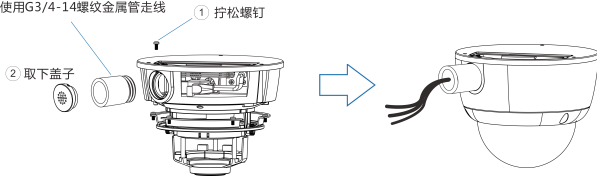


图 3

3. 完成线缆连接，上电。标签含义如图。

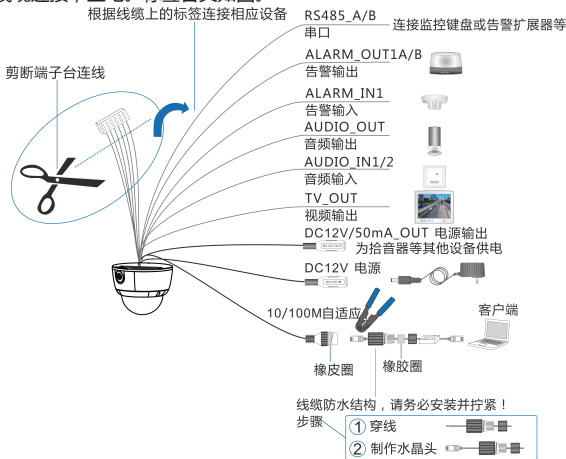


图 4

【说明】尾线接口请根据具体型号支持为准，图 4 所示为接口最全的型号。线缆识别请参考附录部分。

4. 登录客户端

最低配置和系统环境：

- 处理器：3.3 GHz 酷睿®i3 系列及以上或相同性能的其他处理器
- RAM 内存：4GB 及以上
- 操作系统：Windows XP 操作系统或更高版本
- 浏览器：IE7.0 及以上版本，Firefox，Google Chrome（41 及以下版本）
- DirectX：9.0c

【说明】本指南将以 Windows XP 为例，说明登录客户端步骤。

- 1) 第一次使用时请运行光盘中附带的 IPCSearch，在 IPCSearch 中将显示设备的 IP 地址、网关等信息。若 IPC 设备所接入的网络有 DHCP 服务，DHCP 服务器将自动给 IPC 分配 IP 地址。
- 2) 在 IPCSearch 中选中设备，点击 ，在弹出的界面中设置 admin 用户的密码和找回密码时需要用的邮箱，点击激活按钮激活设备。待设备重启。

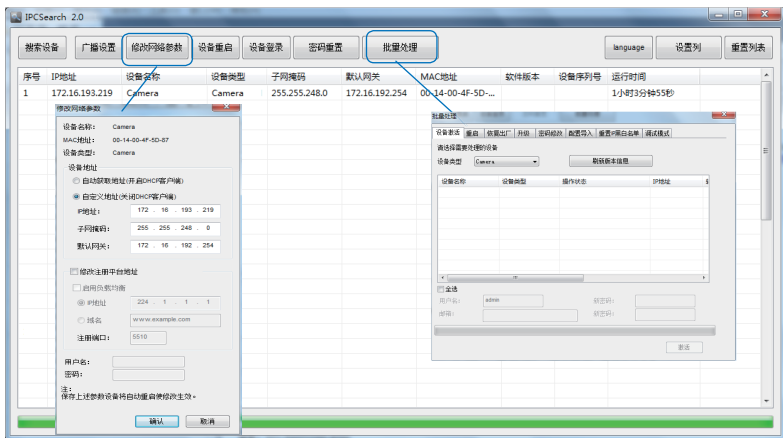


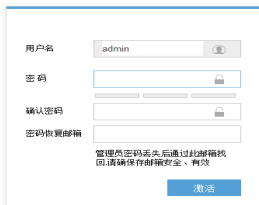
图 5

- 3) 点击 **修改网络参数**，在弹出的界面中配置网络参数。静态分配 IP 地址时，请选择自定义地址，填写以太网参数。修改参数配置，需要填写管理员用户名 (admin) 及激活设备时所设置的密码。完成 IP 配置后，设备将自动重启，重启时间约为 60 秒。
- 4) 在 IPCSearch 中双击设备或点击 **设备登录**，输入用户名和密码 (如图 6)，登录 Web 客户端。



图 6

【说明】 如果直接通过 Web 端首次登录未激活的设备，可在登录界面设置管理员的密码激活设备（如图 7）。登录前需要先将 PC 机设置为与设备在同一网段。



The image shows a web-based login form for activating a device. It contains the following fields and elements:

- 用户名 (Username):** A text input field containing the value "admin".
- 密码 (Password):** A password input field with a masked character (•).
- 确认密码 (Confirm Password):** A second password input field with a masked character (•).
- 密码重置邮箱 (Reset Password Email):** An email input field.
- 提示信息 (Message):** A note in Chinese: "管理员密码激活后通过此邮箱找回密码确保邮箱安全、有效" (After administrator password activation, use this email to reset the password to ensure email security and effectiveness).
- 激活 (Activate):** A blue button at the bottom right.

图 7

5) 登录成功后，下载并安装视频插件。

5. 镜头调节和镜头调整

进入客户端后可以直接浏览图像，界面如图。

【说明】 不同型号浏览界面略有差异，请以设备实际界面为主。更多客户端说明参见客户端帮助文档。

调整镜头角度对准目标区域，完成后拧紧镜头座上的固定螺钉。部分型号支持自动聚焦。安装调试配备手动变焦、手动光圈镜头的型号时，调节镜头上旋钮或旋转镜头，进行对焦或光圈调节。

【说明】 请确认光圈调到最大，再开始对焦和视野调节。

调整设备方向，在 Web 客户端上进行参数调整，直到浏览画面达到预定要求。完成调节后，合上球罩，拧紧固定螺钉。

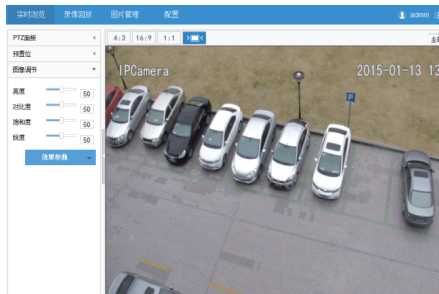


图 8

附录：线缆识别

线序	标签标示	颜色	组别	注释
1	RS485_A	黑	一组	RS485 串口 A
2	RS485_B	棕		RS485 串口 B
3	TV_OUT-	红		视频输出负极
4	TV_OUT+	橙		视频输出正极
5	AUDIO_GND	黄	一组	音频接地
8	AUDIO_GND	紫		音频接地
9	AUDIO_OUT	灰		音频输出
10	AUDIO_IN 2	白		音频输入 2
11	AUDIO_IN 1	粉红		音频输入 1
12	AUDIO_GND	浅绿		音频接地
6	ALARM_OUT1A	绿	一组	告警输出 1, 两个端子不分正负
7	ALARM_OUT1B	蓝		告警输出 1
13	ALARM_IN 1	黑 / 白		告警输入 1
14	ALARM_IN_GND	红 / 白		告警输入接地
15	DC 12V_OUT-	棕 / 白		直流 12V 输出负极
16	DC 12V_OUT+	橙 / 白		直流 12V 输出正极

保修说明

本保修卡适用于您购买的本公司系列产品。

1.终身保质，免费保修期一年（仅限中国大陆地区，中国大陆以外地区请参考英文说明）。

2.凡保修期内，由于本产品自身引起的故障，请与公司售后服务部联系。

3.保修时我们将使用您的保修卡信息，请认真填写。

4.以下情况，属于有偿保修范围：

-人为原因造成的设备故障

-因使用环境不符合本产品要求造成的故障

-因不可抗力造成的产品损坏

-无保修卡

-已过保修期

用户信息

用户名称：

详细地址：

传真：

电话：

邮箱：

邮编：

产品名称：

产品型号：

购买日期：

Preface

Thank you for purchasing our product. If there are any questions, or requests, please do not hesitate to contact us.

Every effort has been made to ensure the accuracy and validity of this Guide. Any update of this Guide is subject to change without notice. For the latest document, please contact the dealer.

Safety Instruction

These instructions are intended to ensure that the user can use the product correctly to avoid danger or property loss. Please read this Guide carefully before using the product, and keep it properly for future reference. If the product cannot work normally or is damaged because the user does not follow the safety instructions, we shall not assume any responsibility.

- Please adopt power supply in the safety voltage range.
- If the product does not work properly, please contact your dealer or the nearest service center. Never attempt to disassemble or repair the product yourself in any way.
- Do not drop the camera or subject it to physical shock.
- When cleaning the lens, please use a rubber dust blower or lens cleaning cloth to remove the dirt. When cleaning transparent housing, please use soft and dry cleaning cloth to wipe it gently. Never apply any cleanser with ethanol or benzene in it
- Do not focus the camera lens on strong light such as the sun or incandescent lamp. The strong light can cause overexposure or light leak (not camera malfunction), which may shorten camera lifetime.
- Do not expose the camera in the environment not defined in the Guide.

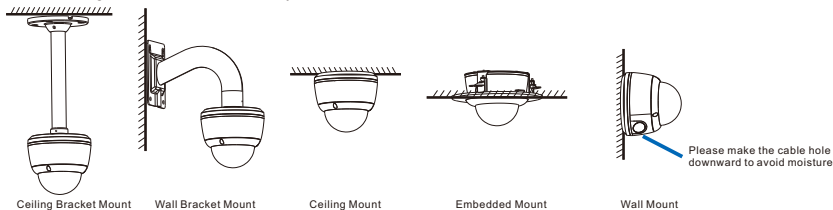
Operating Environment			
Working Voltage	IR models	AC24V, 0.5A	DC12V, 0.8A
	Non-IR models	AC24V, 0.3A	DC12V, 0.5A
Temperature	-40°C~60°C		
Humidity	10%~95% (non-condensing)		
Altitude	-60m~3000m		
Atmospheric Pressure	86kPa~106kPa		

- Keep the camera away from water or any liquid.
- While shipping the camera, pack it in the factory packing or use materials with equivalent quality.
- When it is necessary to replace a part, please contact your dealer in advance and replace the part with specified model or part of the same features. We shall not assume any responsibility for problems caused by unauthorized replacement.
- The camera is IP67-rated. When expose it outdoor, remember to handle it with the back cable and make it water-proof.

[Note]: For more information, please refer to the *User Manual for HD IP Camera* in the attached CD.

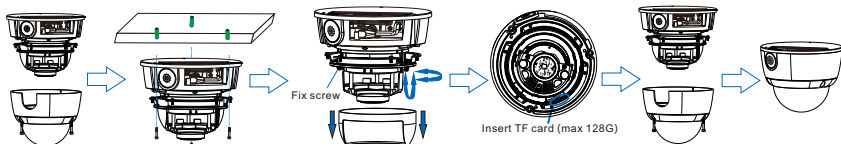
Installation Steps

The camera supports ceiling bracket mount, wall bracket mount, ceiling mount, embedded mount and wall mount. Please get the accessories ready before installation.



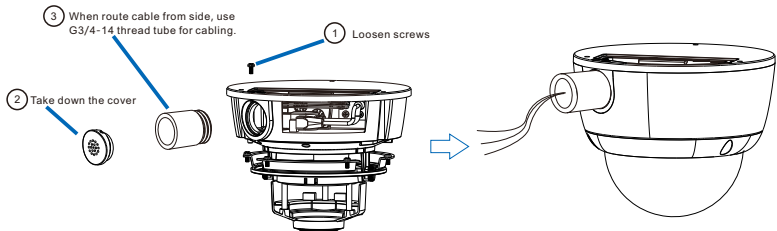
Picture 1

1. Punch holes on the mounting surface with positioning board. Fix the device on the mounting surface or the bracket.



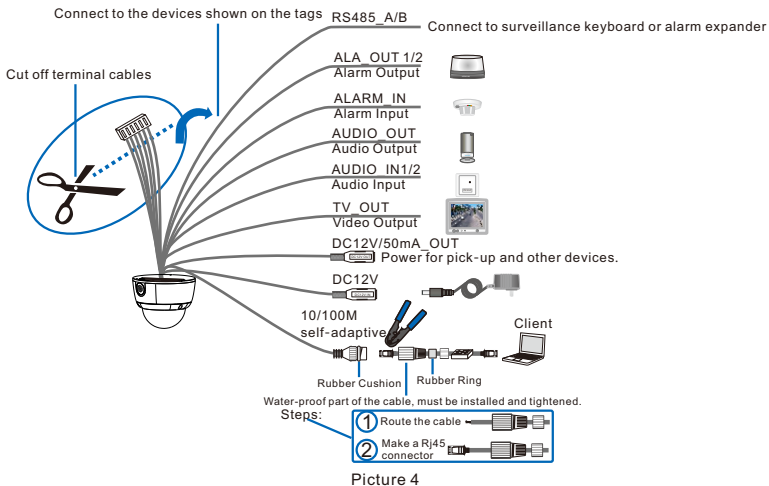
Picture 2

2. User can either route cables from the top or the side up to requests. Way of side cabling is shown below:



Picture 3

3. After connecting cables, power on the device. Tag meanings are explained as follows:



[Note]: Tail connectors are subject to the real models. This picture shows the model with most complete connectors. Cable identification can be referred to in the Appendix.

4. Login client

System for client installation:

Processor: 3.3.0 GHz CORE®i3 series and above or other equivalent processors

RAM Memory: 4GB or above

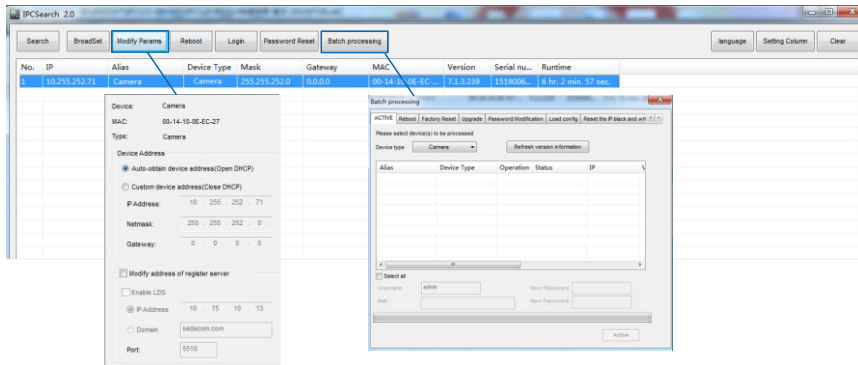
Operating System: Windows XP or above version

Browser: IE7.0 or above version, Firefox, Google Chrome (41 and below)

DirectX : 9.0c

[Note]: This Guide will take Windows XP as example to login to the web client.

- 1) When use the device for the first time, run the IPCSearch in the attached CD and it shows camera IP address and gateway. If the network provides DHCP, DHCP server will assign an IP for the camera automatically.
- 2) Select the device and click "Batch processing". In the popup interface, set admin user's password and the claim e-mail address to find back the password. Click "Active" and wait for rebooting.



Picture 5

3) Click "**Modify Params**" and set the network parameters. When configure a static IP for the camera, please check "**Custom device address (Close DHCP)**" and fill the Ethernet parameter. During the modification, the user name (admin) and the password set before activation should be entered. After configuration, the camera will reboot automatically and this takes 60s.

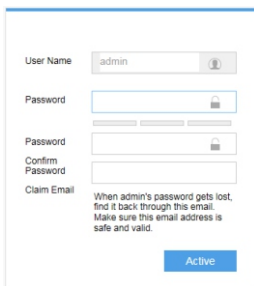
4) Double click the device in IPCSearch or click "**Login**". Enter user name and password (as Picture 6 shows) to login the web client.

User Name

Password

Picture 6

[Note]: If login the nonactivated camera by web client, you can set admin user's password on the login interface to activate the device (as in Picture 7). Before setting, set the PC and the device in the same LAN.



User Name

Password

Confirm Password

Claim Email

When admin's password gets lost, find it back through this email. Make sure this email address is safe and valid.

Picture 7

5) After login, download and install the plug-in.

5. Live view and lens adjustment

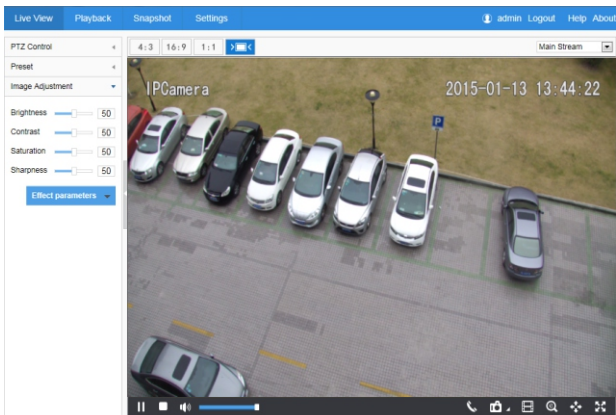
After login, user can view live video directly, as the picture shows.

[Note]: Interface of different models may differ. Please refer to the help file for detailed explanation.

Adjust lens direction to the target area and fix the screws on the lens holder. Some models support auto focus. When adjusting cameras with manual focus and manual aperture, adjust the knob on the lens or rotate the lens to fix focus and aperture.

[Note]: Please make sure that the aperture is adjusted to the max before adjusting focus and field of view.

Adjust camera direction, configure camera parameters in web client until the live view meets requirement. After finishing, cover the dome and fix the screws.



Picture 8

Appendix Cable Identification

NO.	Tag	Color	Group	Remarks
1	RS485_A	Black	One Group	RS-485 Serial Port A
2	RS485_B	Brown		RS-485 Serial Port B
3	TV_Out_-	Red		Video Output Negative
4	TV_Out_+	Orange		Video Output Positive
5	AUDIO_GND	Yellow	One Group	Audio Grounding
8	AUDIO_GND	Purple		Audio Grounding
9	AUDIO_OUT	Gray		Audio Output
10	AUDIO_IN 2	White		Audio Input 2
11	AUDIO_IN 1	Pink		Audio Input 1
12	AUDIO_GND	Light Green	One Group	Audio Grounding
6	ALARM_OUT 1A	Green	One Group	Alarm Output 1, regardless of positive and negative
7	ALARM_OUT 1B	Blue		
13	ALARM_IN 1	Black/White		Alarm Input 1
14	ALARM_IN_GND	Red/White		Alarm Input Grounding
15	DC12V_Out_-	Brown/White		DC12V Output Negative
16	DC12V_Out_+	Orange/White		DC12V Output Positive

Kedacom Two (2) Year Limited Hardware Warranty

WHAT IS COVERED BY THIS WARRANTY?

Kedacom warrants the Kedacom-branded hardware product and accessories contained in the original packaging (hereinafter referred to as "Kedacom Product") against defects in materials and workmanship when used normally in accordance with Kedacom's published guidelines for a period of TWO (2) YEARS from the date of original retail purchase in areas other than mainland China by the end-user purchaser (hereinafter referred to as "Warranty Period"). For the Kedacom Product purchased in mainland China, see the simplified Chinese version of this warranty for details. Kedacom's published guidelines include but are not limited to information contained in technical specifications, user guides, and service communications. The preceding applies unless otherwise agreed in the contract.

WHAT IS NOT COVERED BY THIS WARRANTY?

This warranty does not apply to any non-Kedacom branded hardware products or any software, even if packaged or sold with Kedacom hardware. Manufacturers, suppliers, or publishers, other than Kedacom, may provide their own warranties to you but Kedacom, in so far as permitted by law, provides their products "AS IS". Software distributed by Kedacom with or without the Kedacom brand (including, but not limited to system software) is not covered by this warranty. Please refer to the licensing agreement accompanying the software for details of your rights with respect to its use. Kedacom does not warrant that the operation of the Kedacom Product will be uninterrupted or error-free. Kedacom is not responsible for damage arising from failures to follow instructions relating to the Kedacom Product's use.

This warranty does not apply: (a) to consumable parts, such as batteries, unless failure has occurred due to a defect in materials or workmanship; (b) to cosmetic damage, including but not limited to scratches, dents, and broken plastic on ports; (c) to damage caused by use with another product; (d) to damage caused by acts outside the control of Kedacom, including without limitation acts of God, accidents, abuse, misuse, fire, storms, earthquakes, flood, or other external cause; (e) to damage caused by exposure of the product to heat, bright light, sun, liquids, sand, or other contaminants; (f) to damage caused by operating the Kedacom Product outside Kedacom's published guidelines; (g) to damage caused by service (including upgrades and expansions) performed by anyone other than a representative of Kedacom, Kedacom employee, or authorized Kedacom agent; (h) to an Kedacom Product that has been modified to alter functionality or capability without the written permission of Kedacom; (i) to defects caused by normal wear and tear or otherwise due to the normal aging of the Kedacom Product, or (j) if any serial number has been removed or defaced from the Kedacom Product.

YOUR RESPONSIBILITIES

If your Kedacom product is capable of storing data and other information, you should make periodic backup copies of the information contained on the storage media to protect the contents and as a precaution against possible operational failures.

Before receiving warranty service, Kedacom or its authorized agents may require that you furnish proof of purchase details, respond to questions designed to assist with diagnosing potential issues, and follow Kedacom's procedures for obtaining warranty service. Before submitting your Kedacom Product for warranty service, you should maintain a separate backup copy of the contents of its storage media, remove all personal information that you want to protect, and disable all security passwords.

During warranty service, it is possible that the contents of the Kedacom product's storage media will be lost, replaced or reformatted. In such an event, Kedacom and its authorized agents are not responsible for any loss of data or other information contained on the storage media or any other part of the Kedacom product serviced.

Following warranty service, your Kedacom Product or a replacement product will be returned to you as your Kedacom Product was configured when originally purchased, subject to applicable updates. You will be responsible for reinstalling all other data and information. Recovery and reinstallation of other data and information are not covered under this warranty.

WHAT WILL KEDACOM DO IF THE WARRANTY IS BREACHED?

If during the Warranty Period, you submit a valid claim to Kedacom or an authorized Kedacom agent, Kedacom will, at its option, (i) repair the Kedacom Product using new or previously used parts that are equivalent to new in performance and reliability, or (ii) exchange the Kedacom Product for a refund of your purchase price.

A Kedacom replacement part or product, including a user-installable Kedacom part that has been installed in accordance with instructions provided by Kedacom, assumes the remaining warranty of the Kedacom Product or ninety (90) days from the date of replacement or repair, whichever provides longer coverage for you. When a product or part is replaced or a refund provided, any replacement item becomes your property and the replaced or refunded item becomes Kedacom's property.

Kedacom reserves the right to refund the purchase price as its exclusive warranty remedy.

HOW TO OBTAIN WARRANTY SERVICE?

To seek warranty service, please contact a local authorized Kedacom agent. When contacting the agent via telephone, other charges may apply depending on your location.

User Information

Complete the form below and keep for ready reference.

User Name:	
Address:	Postal Code:
Tel:	Mobile:
Fax:	E-Mail:
Product Name:	Product Model:
Date of Purchase:	

客户咨询热线：400-828-2866

KEDACOM

苏州科达科技股份有限公司

Suzhou Keda Technology Co.,Ltd.

中国: 江苏省苏州市高新区金山路131号(215011)

Tel: +86-512-6841 8188 Fax: +86-512-68412699

Suzhou Keda Technology Co.,Ltd.

Singapore: 627A Aljunied Road, #09-07, BizTech Centre, Singapore 389842

Tel: +65-6842-5700 Fax: +65-6842-5900

05.03.800331 (V3.2) 20200522